

Agence de voyages réceptive - Incoming travel agency - Incoming Reisebüro

Youth groups in Paris 2016

(offer for groups of minimum 20 participants – not valid during trade fairs)

2* hotels (for example hotel Ibis Budget or hotel Mister Bed located at Paris outskirts)

Standard 2* hotels located at Paris outskirts / rooms with shower or bath WC/telephone/TV. Continental breakfast



Accommodation

Most rooms are equipped with a large double bed and a single bunk bed, so either 1, 2 or 3 persons can be accommodated in one room.

1 double bed for 2 persons (1 double mattress, 1 sheet, 1 double deck)

1 bunk bed for 1 person

This means also that when 3 persons share a triple, two persons are accommodated in one double bed and the third person occupies the bunk bed

All rooms are equipped with shower, toilet, a sink and a TV.

Our price per person per night including continental breakfast and taxes:

	1 st July – 31 th August / 4 th January – 29 th February	1 st November –29 th December	1 st March – 30 th June / 1 st September – 31 th October	30 th December 3 rd January / 25 th -27 th March 13 th - 15 May
In triple	31 €	32 €	33 €	60 €
In double	33 €	34 €	36 €	63 €
In single	60 €	63 €	67 €	120 €

Free place: 1 single room free for 15 paying rooms

Dinner in a nearby restaurant: 3 course meal, drinks not included, starting at 20 €

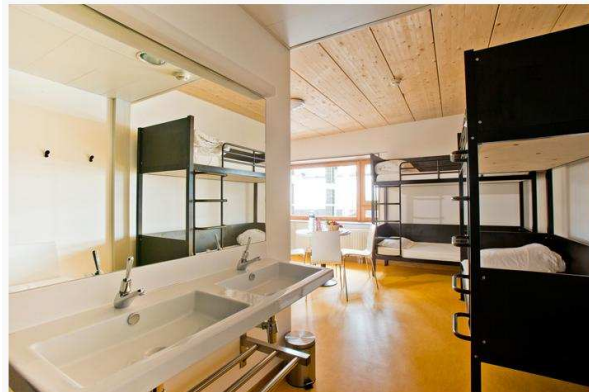
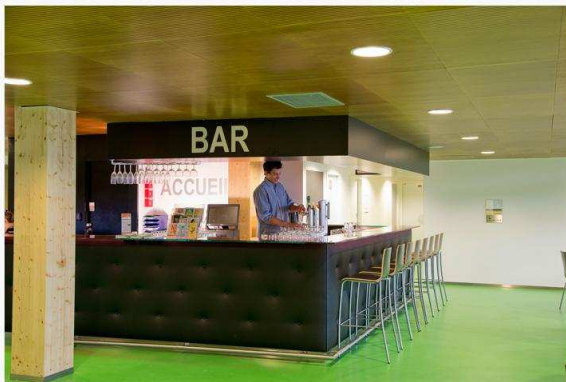
Security deposit: 20 € per person to be paid upon arrival at the hotel

Hotel example: Ibis Budget, Mister Bed

Agence de voyages réceptive - Incoming travel agency - Incoming Reisebüro

Hostel "Pajol"

Newly built eco-friendly hostel in the 18th district of Paris, 10 minutes walk from the Gare du Nord (Eurostar) next to the metro station La Chapelle, 2 stations from Montmartre. **(other hostels on request)**



Services: Multilingual staff at the front desk available 24/24

Rooms: 330 beds in 103 rooms (1 to 6 persons per room)

Rooms with bunk beds with linen, shower, sink, table and chairs; (toilets are not available in all rooms), daily room cleaning included.

Common facilities: TV and lounge, bar, free wifi, vending machines, luggage storage restaurant, billiards, baby foot.

Self-service restaurant with 148 seats, breakfast, lunch and dinner, picnic. 7 meeting rooms with table and chairs, video + 1 large room for events. **Nearby** library and sports facilities.

Our price per person per night including breakfast and taxes:

	January, February, July, August, November, December	March, April, May, June, September, October
In double or multi-bedded rooms	38 €	40 €
In single	65 €	67 €

Meals in the self service restaurant: + 15 € per person for a hot meal / + 12 € for a lunch box

Free place: 1 single room free for 15 paying rooms

Compulsory contribution to the hostel association + 60 € for the whole group

Non-refundable deposit 200 € per group reservation / Security deposit € 20 per person.

Middleclass hotels on the outskirts

Middleclass hotels or residence near Paris and near a tram or a metro station, with pleasant neighborhood or also near Disneyland.

Easy access by coach, coach parking, large capacity.

Price on request